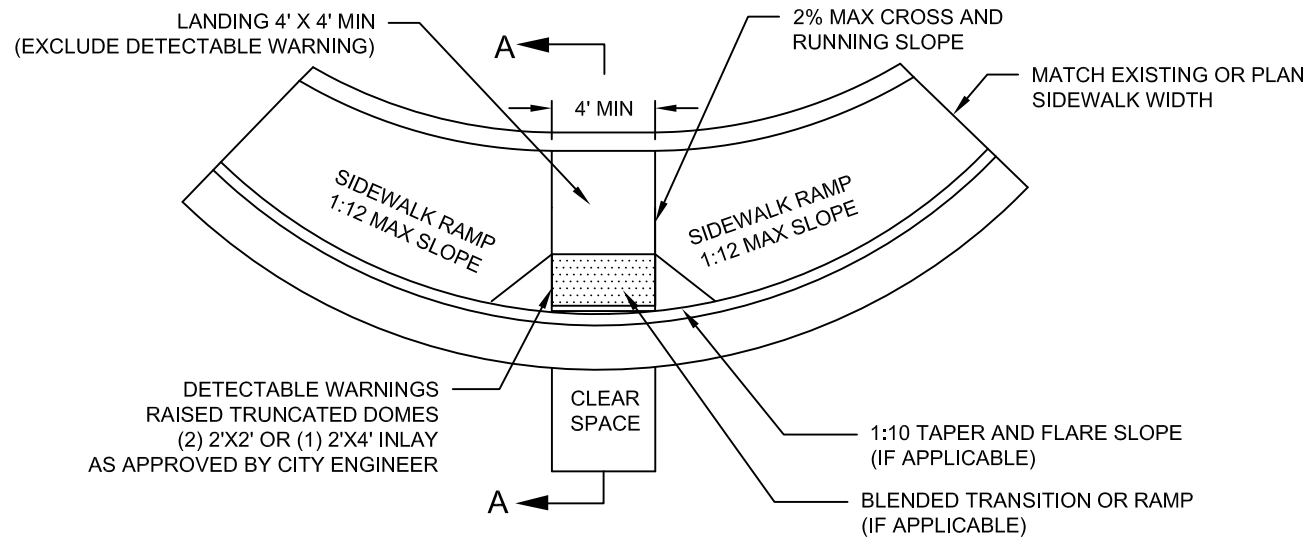
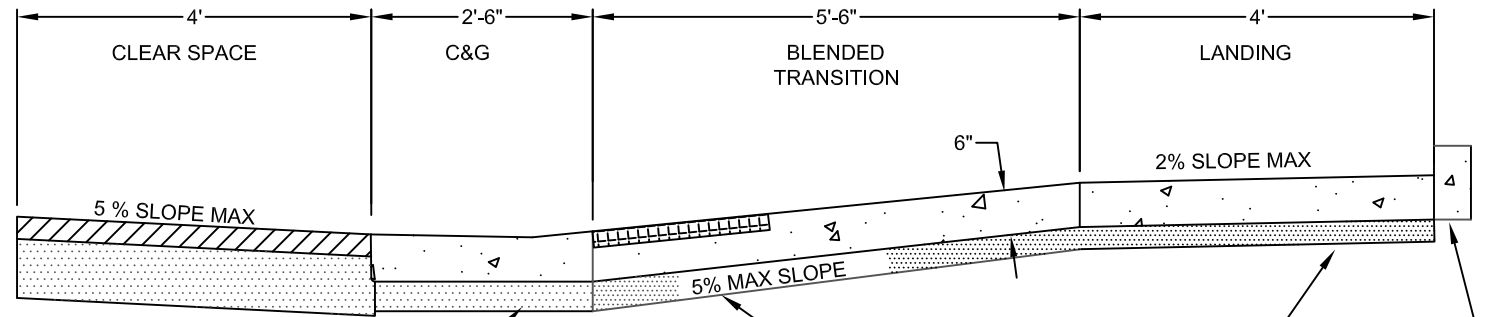


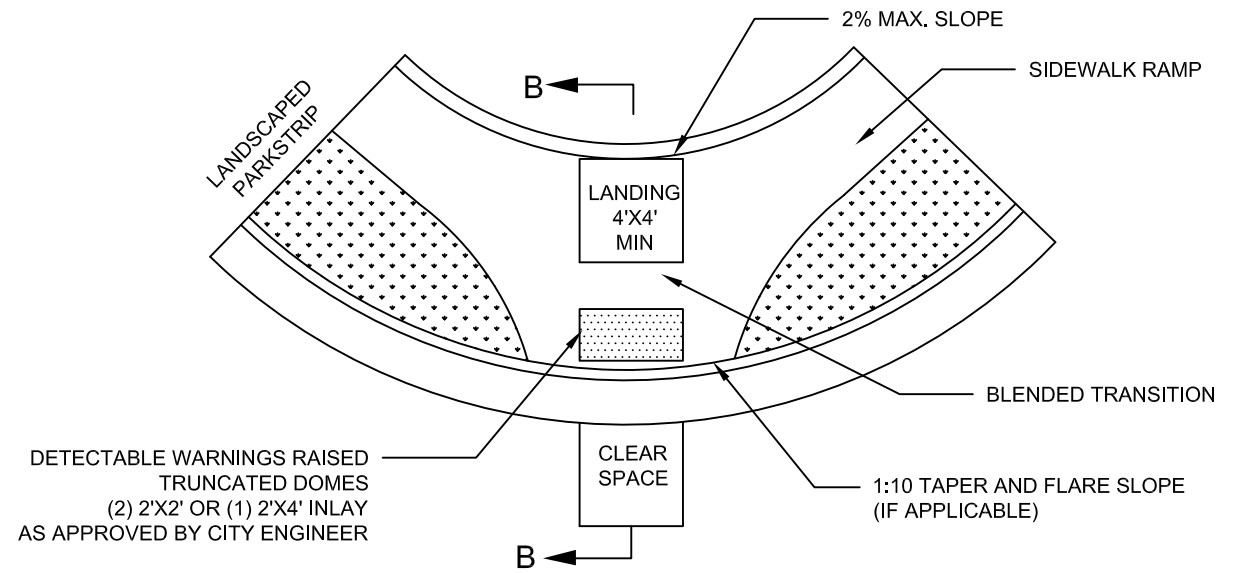
SECTION A-A
CROSS SECTION ADA ACCESS WITHOUT
A PARK STRIP



ADA ACCESS RAMP WITHOUT A PARK STRIP



SECTION B-B
CROSS SECTION ADA ACCESS WITH A
PARK STRIP



ADA ACCESS RAMP WITH A PARK STRIP

GENERAL NOTES

- ALL CURB, GUTTER, SIDEWALK AND DRIVE APPROACHES SHALL BE DESIGNED AND STAKED BY A LICENSED ENGINEER OR LAND SURVEYOR AND SHALL SUBMIT A PLAN AND PROFILE DRAWING TO THE CITY ENGINEER FOR APPROVAL.
- THE CITY ENGINEER WILL REQUIRE A LAYOUT INSPECTION.
- 24 HR . NOTICE WILL BE REQUIRED FOR ALL CONCRETE INSPECTIONS. THE INSPECTOR MAY INSPECT THE FOLLOWING:
A) DENSITY TESTS D) AIR ENTRAINMENT TESTS
B) GRADE VERIFICATION E) EXPANSION JOINT PLACEMENT
C) SLUMP TESTS F) COMPRESSION CYLINDER TESTS
- CONCRETE
A) CONCRETE SHALL BE CLASS 4000 AS PER APWA SECTION 03 30 04
B) CONCRETE SHALL BE 6.5 BAG MIX
C) SLUMP SHALL BE LESS THAN 4"
D) AIR ENTRAINMENT SHALL BE 6% +/- 1%
- CURB AND GUTTER SHALL BE APWA STANDARD PLAN NO. 205 TYPE A.
- SIDEWALK SHALL ADHERE TO APWA STANDARD PLAN 231. SIDEWALK SHALL BE 5" THICK FOR ALL SIDEWALK IN RESIDENTIAL AREAS AND 5" IN COMMERCIAL . DRIVE APPROACHES SHALL BE 6" THICK FOR RESIDENTIAL AND 8" FOR COMMERCIAL, OR SPECIFIED BY PROJECT ENGINEER.
- FLARED DRIVE APPROACH SHALL BE APWA STANDARD PLAN NO. 221.
- WATERWAY SHALL BE APWA STANDARD PLAN NO. 211.
- REINFORCEMENT STEEL SHALL MEET REQUIREMENTS OF APWA SECTION 03 20 00.
- SIDEWALK RAMP DETECTABLE WARNINGS SHALL BE RED RAISED TRUNCATED DOMES.
- SIDEWALK RAMP DETECTABLE WARNINGS SHALL BE 2'X4' INLAYS AND SHALL BE APPROVED BY THE CITY ENGINEER PRIOR TO INSTALLATION
- CONCRETE PLACED IN COLD WEATHER CONDITIONS WILL BE PLACED IN ACCORDANCE WITH ACI 306R REQUIREMENTS.
- SEE APWA STANDARD PLANS 235 TO 238 FOR ADDITIONAL INSTALLATION DETAILS.
- TYPE D CURB AND GUTTER INSTALLATION MUST BE APPROVED IN WRITING BY THE CITY ENGINEER PRIOR TO INSTALLATION.

MAXIMUM SLOPES

	RUNNING SLOPE	CROSS SLOPE
LANDING	1:48 (2%)	1:48 (2%)
RAMP	1:12 (8.33%)	1:48 (2%)
CLEAR SPACE	1:20 (5%)	1:48 (2%)
BLENDED TRANSITION	1:20 (5%)	1:48 (2%)

DATE	REVISIONS	MADE BY
4/10	GENERAL REVISIONS	MSP
4/15	GENERAL REVISIONS	CTZ
4/19	GENERAL REVISIONS	CTZ

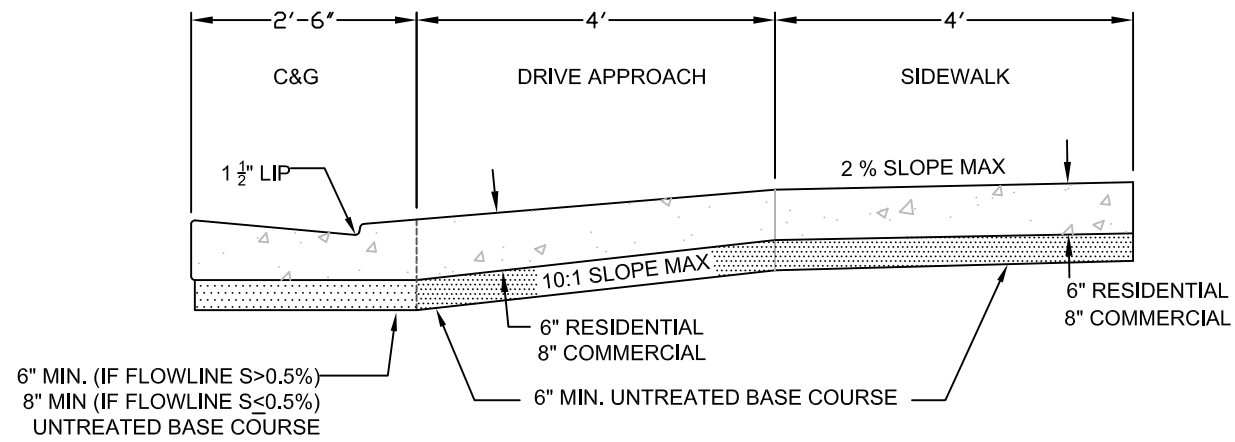


MURRAY CITY CORPORATION
ENGINEERING DEPARTMENT
4646 SOUTH 500 WEST
MURRAY, UT 84123
801 270-2400

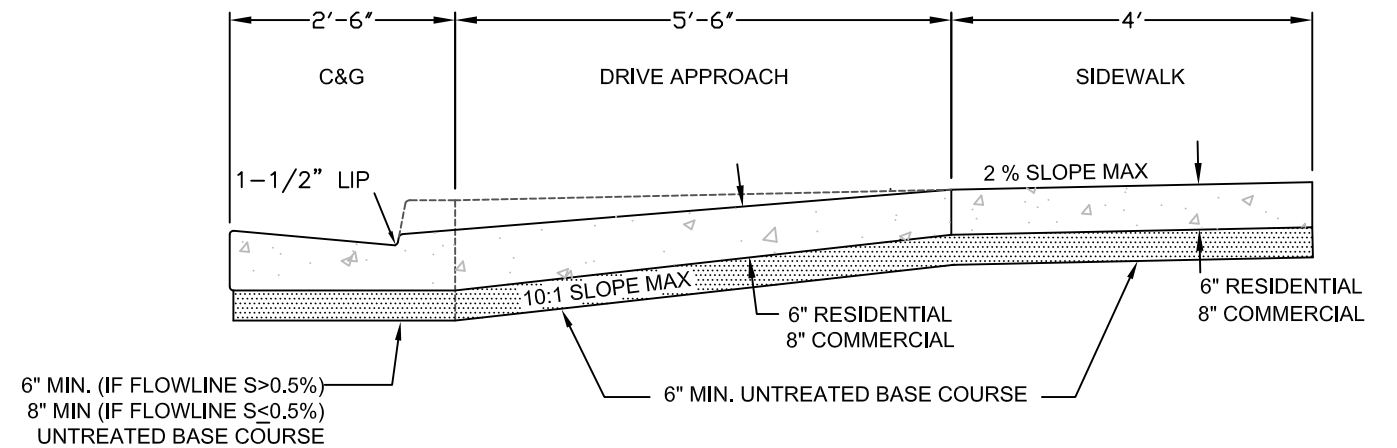
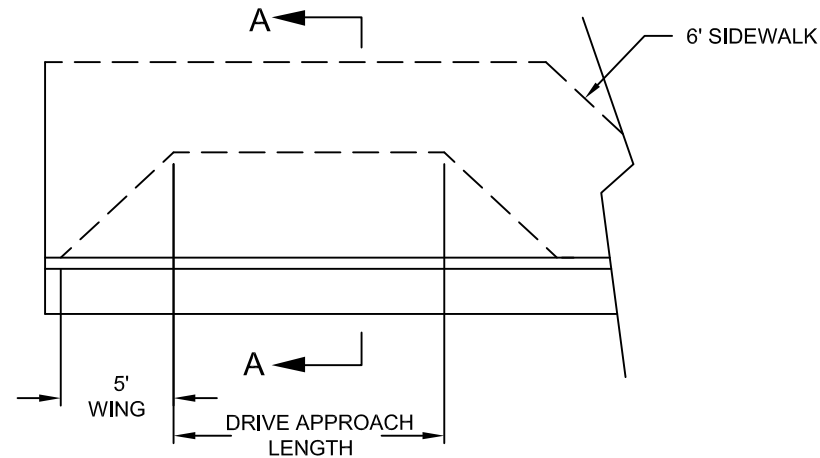
MURRAY CITY

ADA ACCESS SIDEWALK RAMP

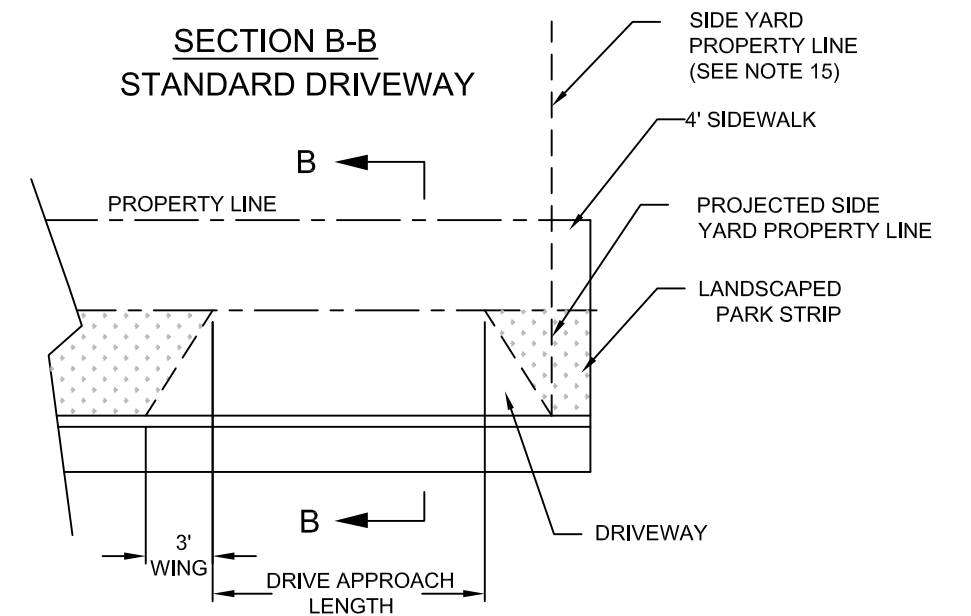
DETAILS C - 1



SECTION A-A
6' SIDEWALK TRANSITION AT DRIVEWAY



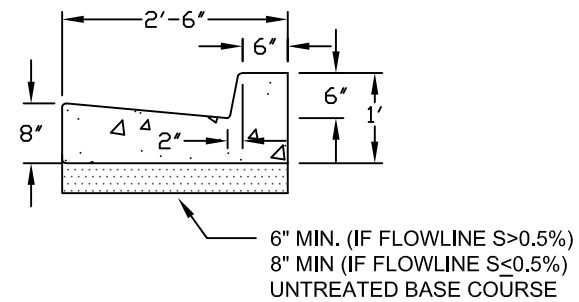
SECTION B-B
STANDARD DRIVEWAY



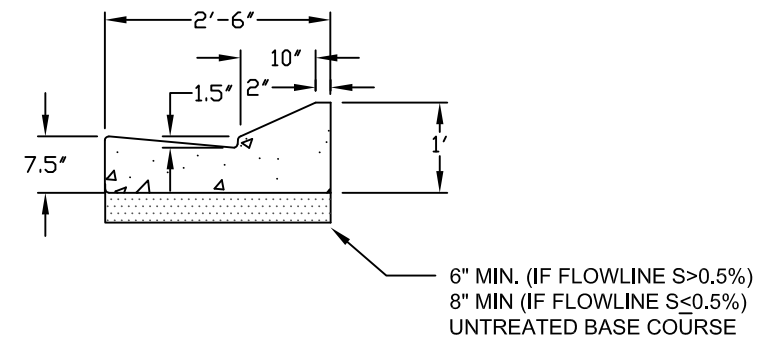
DRIVE APPROACH LENGTHS

RESIDENTIAL	12' MIN. - 30' MAX.
COMMERCIAL	25' MIN. - 50' MAX.

CURB AND GUTTER
TYPE A



CURB AND GUTTER
TYPE D



GENERAL NOTES

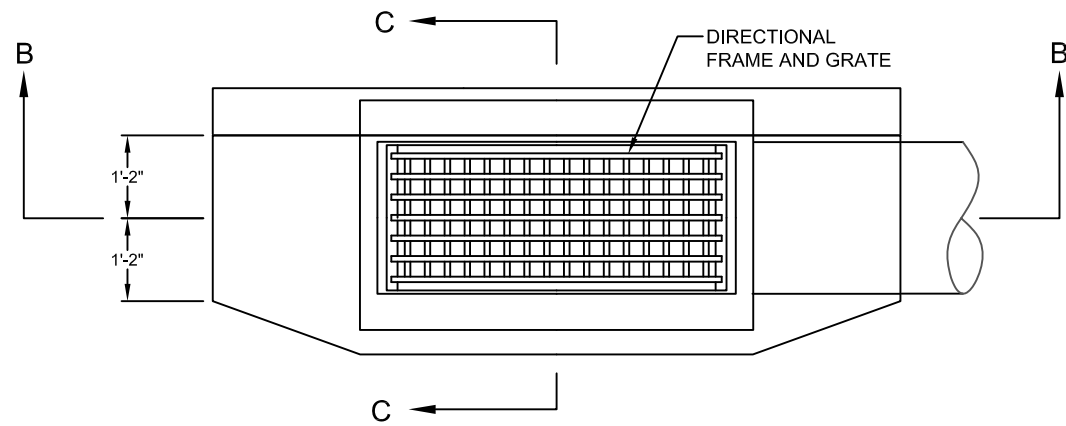
- ALL CURB, GUTTER, SIDEWALK AND DRIVE APPROACHES SHALL BE DESIGNED AND STAKED BY A LICENSED ENGINEER OR LAND SURVEYOR AND SHALL SUBMIT A PLAN AND PROFILE DRAWING TO THE CITY ENGINEER FOR APPROVAL.
- THE CITY ENGINEER WILL REQUIRE A LAYOUT INSPECTION.
- 24 HR . NOTICE WILL BE REQUIRED FOR ALL CONCRETE INSPECTIONS. THE INSPECTOR MAY INSPECT THE FOLLOWING:
 - DENSITY TESTS
 - GRADE VERIFICATION
 - SLUMP TESTS
 - AIR ENTRAINMENT TESTS
 - EXPANSION JOINT PLACEMENT
 - COMPRESSION CYLINDER TESTS
- CONCRETE
 - CONCRETE SHALL BE CLASS 4000 AS PER APWA SECTION 03 30 04
 - CONCRETE SHALL BE 6.5 BAG MIX
 - SLUMP SHALL BE LESS THAN 4"
 - AIR ENTRAINMENT SHALL BE 6% +/- 1%
- CURB AND GUTTER SHALL BE APWA STANDARD PLAN NO. 205 TYPE A.
- SIDEWALK SHALL ADHERE TO APWA STANDARD PLAN 231. SIDEWALK SHALL BE 5" THICK FOR ALL SIDEWALK IN RESIDENTIAL AREAS AND 5" IN COMMERCIAL . DRIVE APPROACHES SHALL BE 6" THICK FOR RESIDENTIAL AND 8" FOR COMMERCIAL, OR SPECIFIED BY PROJECT ENGINEER.
- FLARED DRIVE APPROACH SHALL BE APWA STANDARD PLAN NO. 221.
- WATERWAY SHALL BE APWA STANDARD PLAN NO. 211.
- REINFORCEMENT STEEL SHALL MEET REQUIREMENTS OF APWA SECTION 03 20 00.
- SIDEWALK RAMP DETECTABLE WARNINGS SHALL BE RED RAISED TRUNCATED DOMES.
- SIDEWALK RAMP DETECTABLE WARNINGS SHALL BE 2'X4' INLAYS AND SHALL BE APPROVED BY THE CITY ENGINEER PRIOR TO INSTALLATION.
- DRIVE APPROACH SHALL NOT EXTEND BEYOND THE PROJECTED SIDE YARD PROPERTY LINE.

DATE	REVISIONS	MADE BY
5/30/01	GENERAL REVISIONS	JTS
4/5/04	RAMP UPDATES	JTS
12/28/04	GENERAL REVISIONS	JKS
4/10	GENERAL REVISIONS	MSP
4/15	GENERAL REVISIONS	CTZ
4/19	GENERAL REVISIONS	CTZ

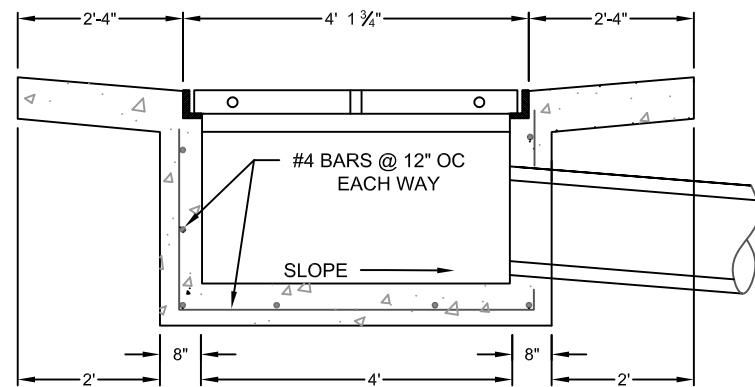


MURRAY CITY CORPORATION
ENGINEERING DEPARTMENT
4646 SOUTH 500 WEST
MURRAY, UT 84123
801 270-2400

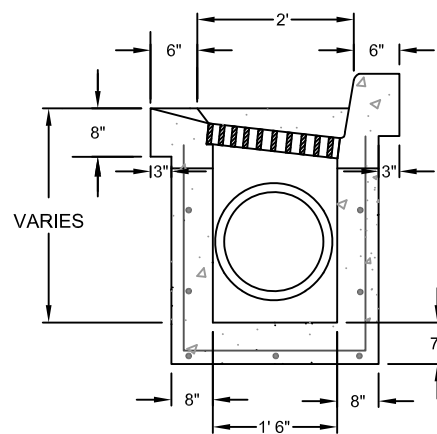
MURRAY CITY
SIDEWALK DRIVE APPROACH
SIDEWALK RAMP
DETAILS C - 2



PLAN



SECTION B - B

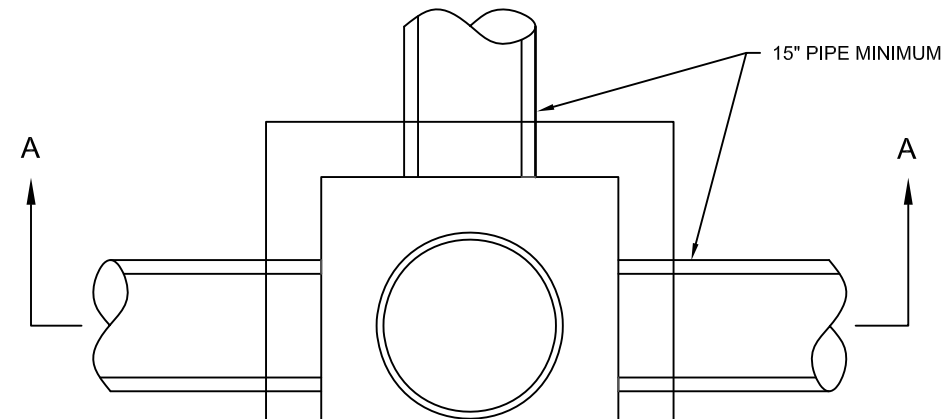


SECTION C - C

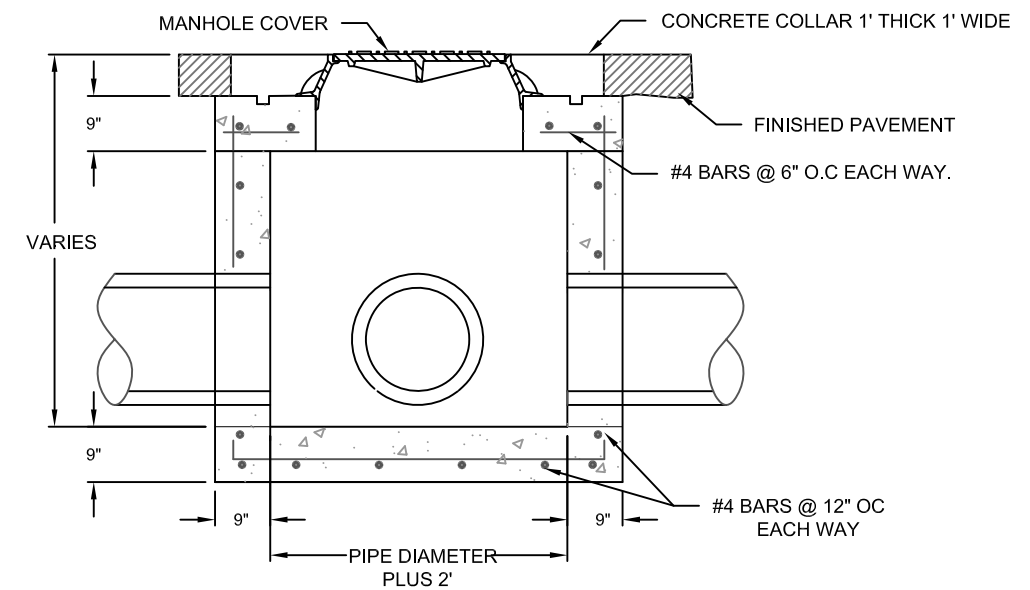
CATCH BASIN

GENERAL NOTES

1. CONCRETE SHALL BE CLASS 4000 AS PER APWA SECTION 03 30 04.
2. REINFORCEMENT SHALL BE ASTM A 615, GRADE 60, DEFORMED BARS AS PER APWA SECTION 03 20 00.
3. BACKFILL WITH GRADE 1 UNTREATED BASE COURSE AS PER APWA 32 11 23 2.1.
4. MANHOLE COVER SHALL BE APWA STANDARD PLAN NO. 302.
5. GRADE RINGS SHALL BE APWA STANDARD PLAN NO. 361.
6. CONCRETE COLLAR SHALL BE APWA STANDARD PLAN NO. 362.
7. DIRECTIONAL GRATE AND FRAME SHALL BE APWA STANDARD PLAN NO. 309 OR 310.
8. EXTEND BOX 6\"



PLAN



SECTION A-A

CLEANOUT BOX

DATE	REVISIONS	MADE BY
5/30/01	GENERAL REVISIONS	JTS
4/5/04	RAMP UPDATES	JTS
12/28/04	GENERAL REVISIONS	JKS
4/10	GENERAL REVISIONS	MSP
5/19	GENERAL REVISIONS	CTZ

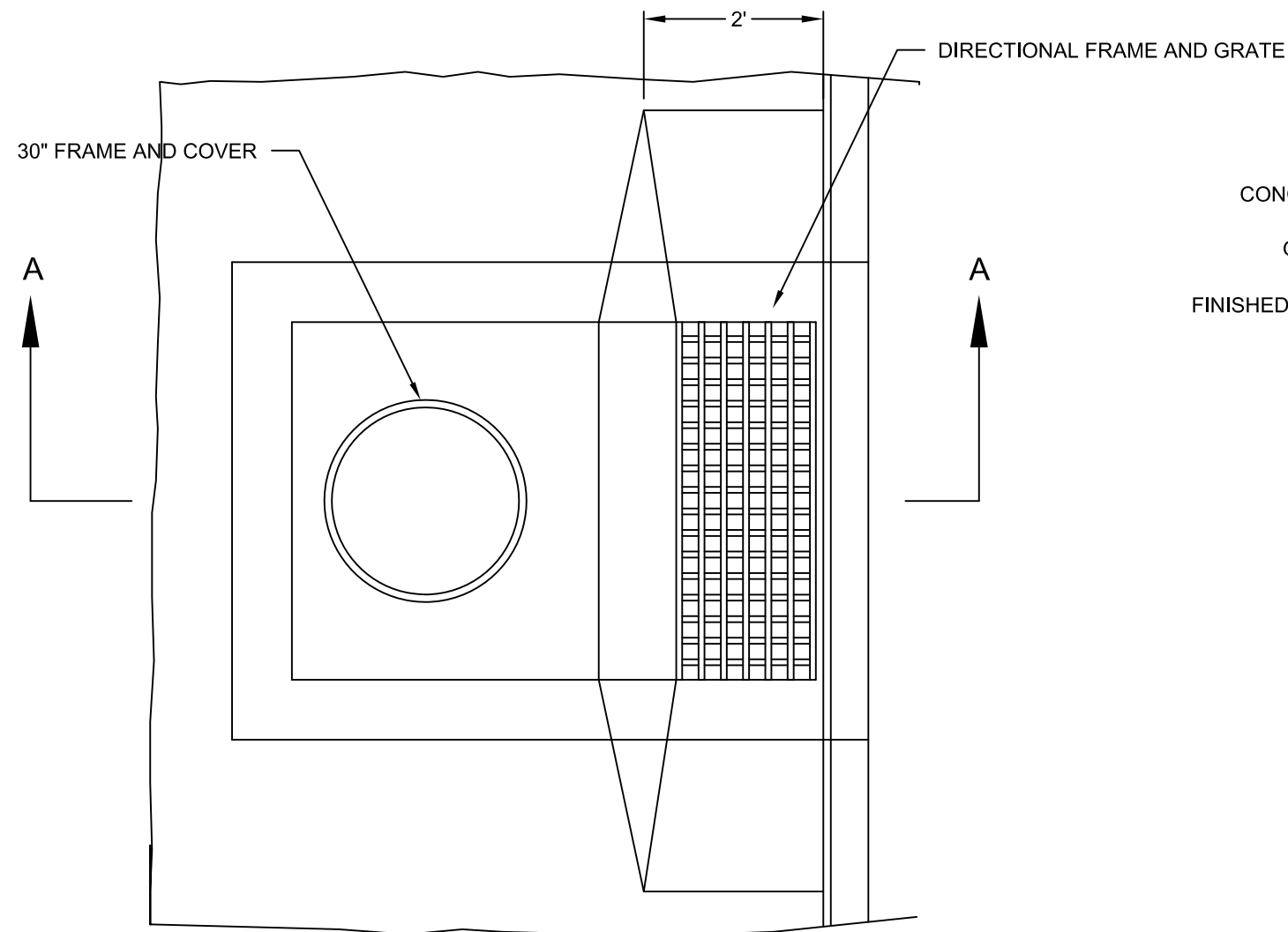


MURRAY CITY CORPORATION
ENGINEERING DEPARTMENT
4646 SOUTH 500 WEST
MURRAY, UT 84123
801 270-2400

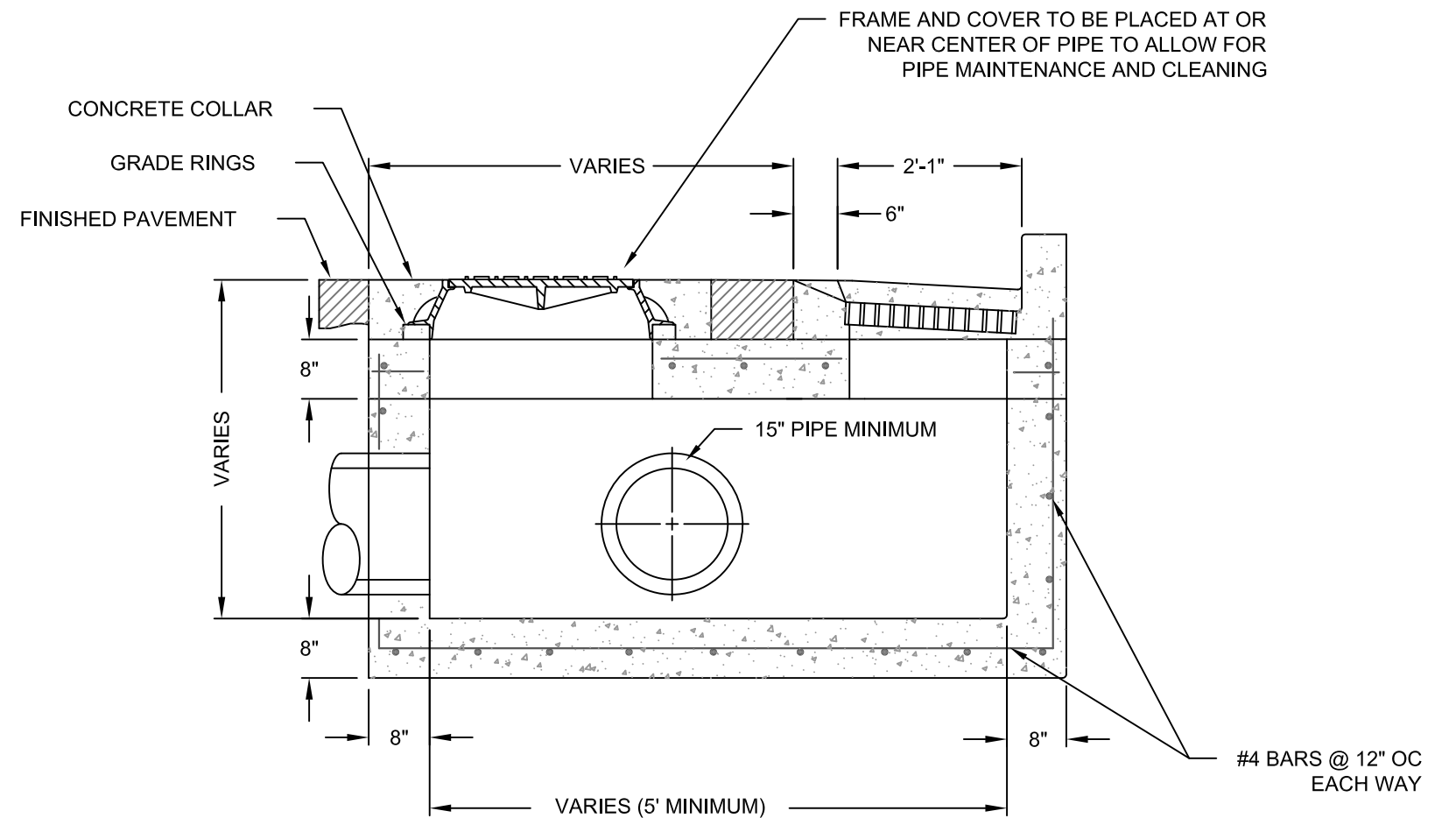
MURRAY CITY

CATCH BASIN AND
CLEANOUT

DETAILS C - 3



PLAN



SECTION A - A

COMBINATION INLET/CLEANOUT BOX

GENERAL NOTES

1. CONCRETE SHALL BE CLASS 4000 AS PER APWA SECTION 03 30 04.
2. REINFORCEMENT SHALL BE ASTM A 615, GRADE 60, DEFORMED BARS AS PER APWA SECTION 03 20 00.
3. BACKFILL WITH GRADE 1 UNTREATED BASE COURSE AS PER APWA 32 11 23 2.1.
4. MANHOLE COVER SHALL BE APWA STANDARD PLAN NO. 302.
5. GRADE RINGS SHALL BE APWA STANDARD PLAN NO. 361
6. CONCRETE COLLAR SHALL BE APWA STANDARD PLAN NO. 362
7. DIRECTIONAL GRATE AND FRAME SHALL BE APWA STANDARD PLAN NO. 309 OR 310.
8. EXTEND BOX 6" BELOW PIPE INVERT FOR SEDIMENT CONTROL.

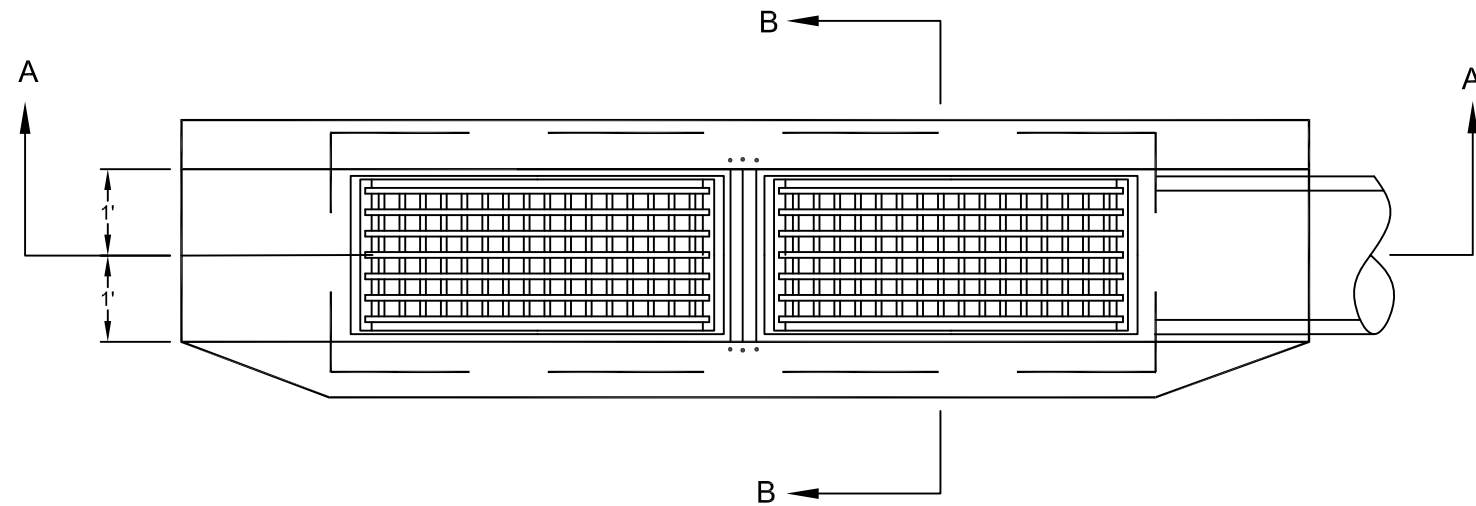
DATE	REVISIONS	MADE BY
5/30/01	GENERAL REVISIONS	JTS
4/5/04	TITLE BLOCK REVISIONS	JTS
6/30/10	GENERAL REVISIONS	MSP



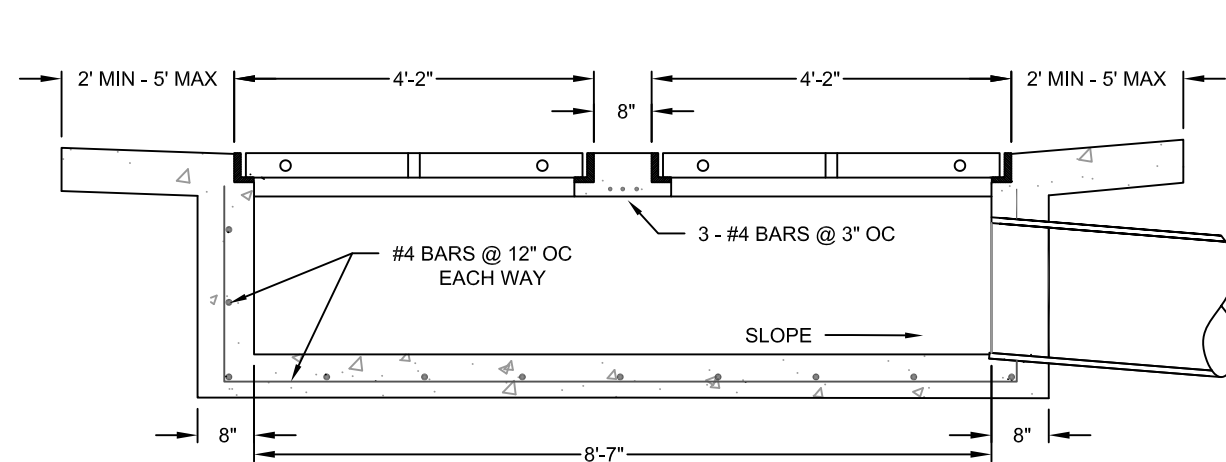
MURRAY CITY CORPORATION
ENGINEERING DEPARTMENT
 4646 SO. 500 West
 MURRAY, UT. 84123
 270-2400

MURRAY CITY
COMBINATION
INLET/CLEANOUT BOX

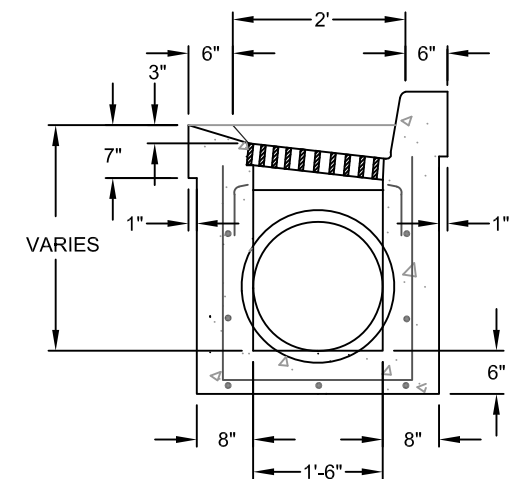
C-4



PLAN



SECTION A - A



SECTION B - B

DOUBLE INLET CATCH BASIN

GENERAL NOTES

1. CONCRETE SHALL BE CLASS 4000 AS PER APWA SECTION 03 30 04.
2. REINFORCEMENT SHALL SHALL BE ASTM A 615, GRADE 60, DEFORMED BARS AS PER APWA SECTION 03 20 00.
3. BACKFILL WITH GRADE 1 UNTREATED BASE COURSE AS PER APWA 32 11 23 2.1.
4. DIRECTIONAL GRATE AND FRAME SHALL BE APWA STANDARD PLAN NO. 309 OR 310.
5. EXTEND BOX 6" BELOW PIPE INVERT FOR SEDIMENT CONTROL.

DATE	REVISIONS	MADE BY
4/10	GENERAL REVISIONS	MSP
1/13	GENERAL REVISIONS	MSP
4/19	GENERAL REVISIONS	CTZ

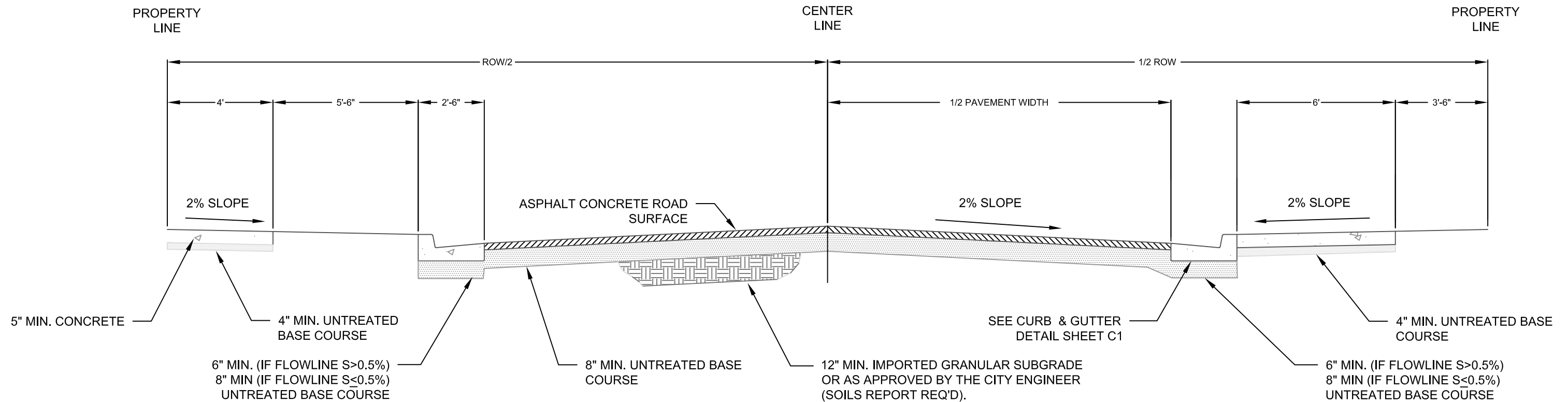


MURRAY CITY CORPORATION
ENGINEERING DEPARTMENT
4646 SOUTH 500 WEST
MURRAY, UT 84123
801 270-2400

MURRAY CITY

DOUBLE INLET CATCH BASIN

DETAILS C - 4A



ROADWAY SECTION ROW*

*SIDEWALK, PARK STRIP AND ROAD WIDTHS VARY IN THE MU, TOD AND MCCD ZONES

ROADWAY SECTION				
CLASSIFICATION	ROW (FT)	PAVEMENT WIDTH (FT)	LANES	PAVEMENT THICKNESS (IN)
ALLEY	25 TO 30	22 TO 25	2	3
RESIDENTIAL	49 TO 60	25 TO 35	2	3
MINOR COLLECTOR	60 TO 66	35 TO 40	2 TO 3	4
MAJOR COLLECTOR	66 TO 80	40 TO 60	2 TO 5	5 TO 6
MINOR ARTERIAL	66 TO 80	40 TO 60	3 TO 5	6 TO 7

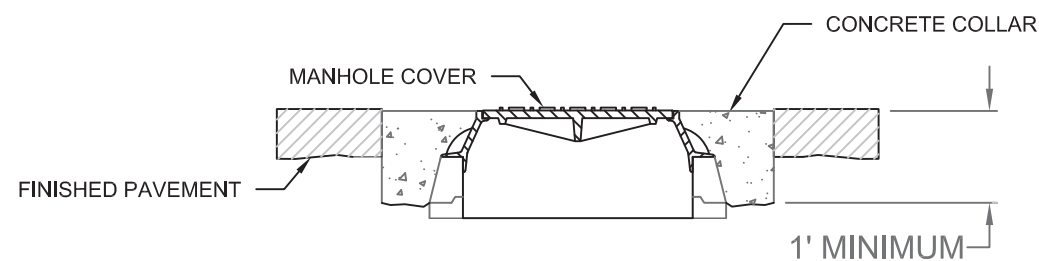
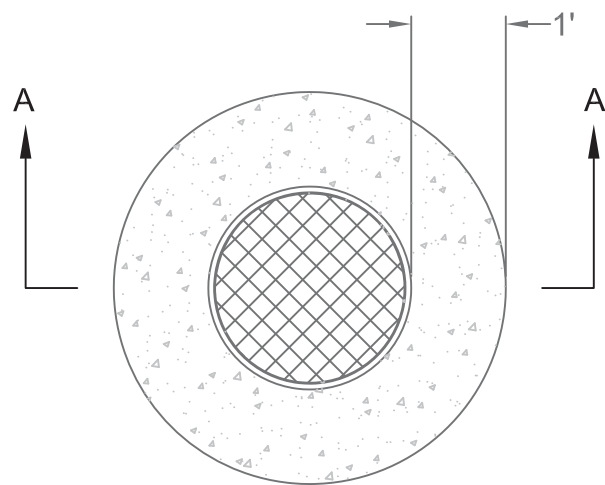
DATE	REVISIONS	MADE BY
4/10	GENERAL REVISIONS	MSP
4/15	GENERAL REVISIONS	CTZ
4/19	GENERAL REVISIONS	CTZ



MURRAY CITY CORPORATION
ENGINEERING DEPARTMENT
4646 SOUTH 500 WEST
MURRAY, UT 84123
801 270-2400

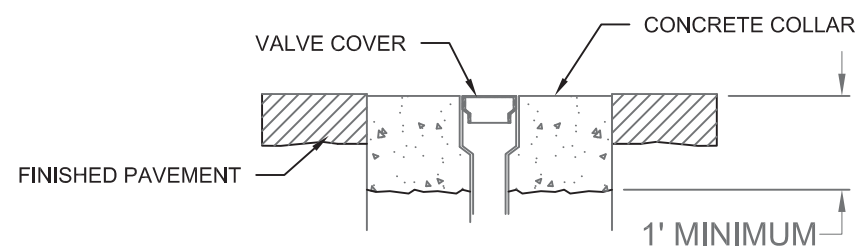
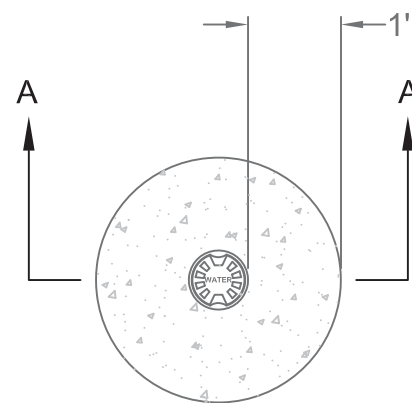
MURRAY CITY

ROADWAY DETAIL
DETAILS C - 5



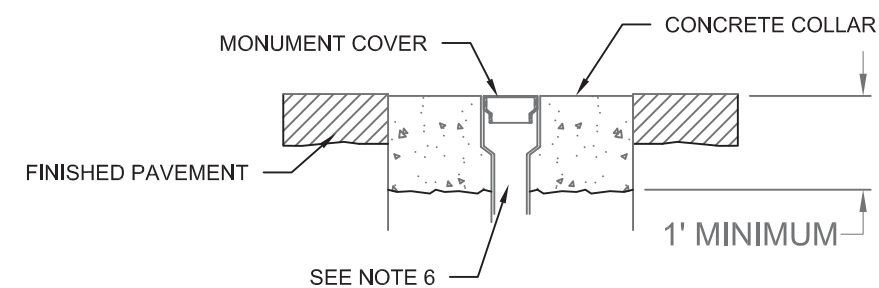
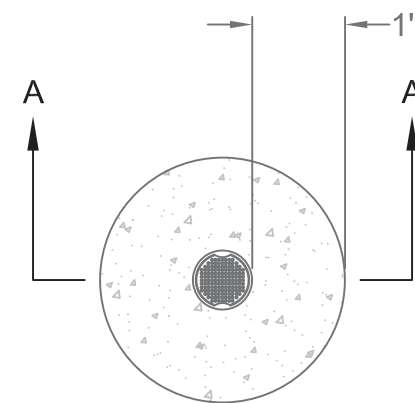
SECTION A-A

MANHOLE COLLAR



SECTION A-A

WATER VALVE COLLAR



SECTION A-A

SURVEY MONUMENT
COLLAR

GENERAL NOTES

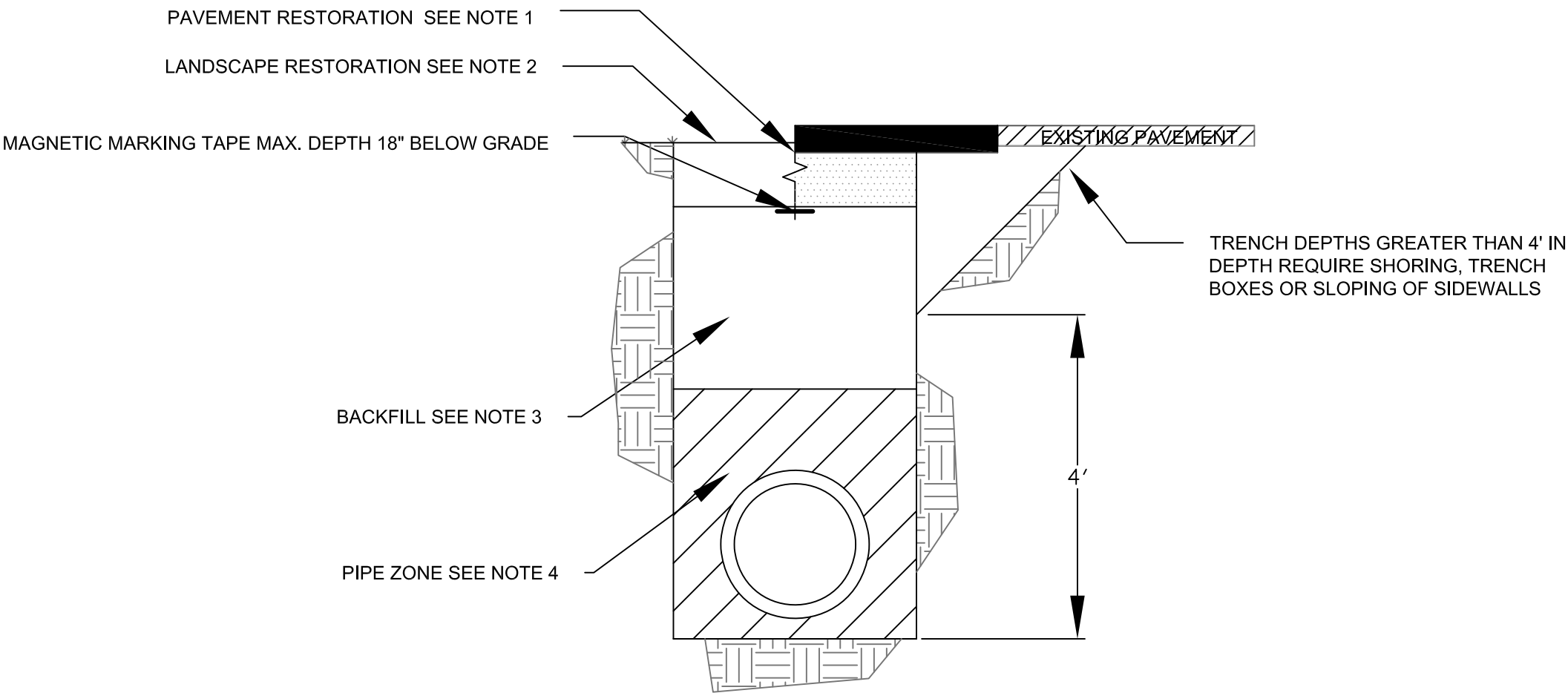
1. CONCRETE SHALL BE CLASS 4000 AS PER APWA SECTION 03 30 04. U-CART OR HAND MIXED CONCRETE WILL NOT BE ACCEPTED.
2. REINFORCEMENT SHALL BE ASTM A 615, GRADE 60, DEFORMED BARS AS PER APWA SECTION 03 20 00.
3. BACKFILL WITH GRADE 1 UNTREATED BASE COURSE AS PER APWA 32 11 23 2.1.
4. GRADE RINGS SHALL BE APWA STANDARD PLAN NO. 361
5. CONCRETE COLLAR SHALL BE APWA STANDARD PLAN NO. 362
6. SEE APWA STANDARD PLANS 273 AND 274 FOR MOUNMENT INSTALLATION DETAILS.
7. SALT LAKE COUNTY SURVEYOR MUST BE CONTACTED (385-468-8240) PRIOR TO MONUMENT INSTALLATION, REMOVAL OR RECONSTRUCTION.

DATE	REVISIONS	MADE BY
6/15/10	GENERAL REVISIONS	MSP
4/06/15	GENERAL REVISIONS	CTZ
5/01/19	GENERAL REVISIONS	CTZ



MURRAY CITY CORPORATION
ENGINEERING DEPARTMENT
4646 SOUTH 500 WEST
MURRAY, UT 84123
801 270-2400

MURRAY CITY
MANHOLE AND VALVE
COLLAR DETAIL
DETAILS C-6



TRENCH BACKFILL

NOTES

- 1. DO NOT INSTALL ASPHALT OR CONCRETE SURFACING UNTIL TRENCH COMPACTION IS ACCEPTED BY ENGINEER.
SEE PLAN 255 OR 256 OF 2017 APWA STANDARD PLANS.
- 2. PROVIDE 4" OF COMPACTED TOPSOIL AND MATCH TO EXISTING GRADE. PLACE VEGETATION TO MATCH PRE-EXISTING CONDITIONS.
- 3. GRANULAR BACKFILL BORROW MATERIAL TO BE A-1 CLASSIFICATION WITH A MAXIMUM PARTICLE SIZE OF 2 ".
UNCOMPACTED LIFT THICKNESS TO BE A MAXIMUM OF 8" AND PLACED ACCORDING TO 2007 APWA SECTION 31 05 15.
FLOWABLE FILL TO BE LOW STRENGTH (60 PSI) PER APWA SECTION 31 05 15.
- 4. PIPE ZONE MATERIAL TO BE PLACE ACCORDING TO 2017 APWA STANDARD PLAN 382.

DATE	REVISIONS	MADE BY
2/13	GENERAL REVISIONS	MSP
2/18	GENERAL REVISIONS	CTZ
5/19	GENERAL REVISIONS	CTZ



MURRAY CITY CORPORATION
ENGINEERING DEPARTMENT
4646 SOUTH 500 WEST
MURRAY, UT 84123
801 270-2400

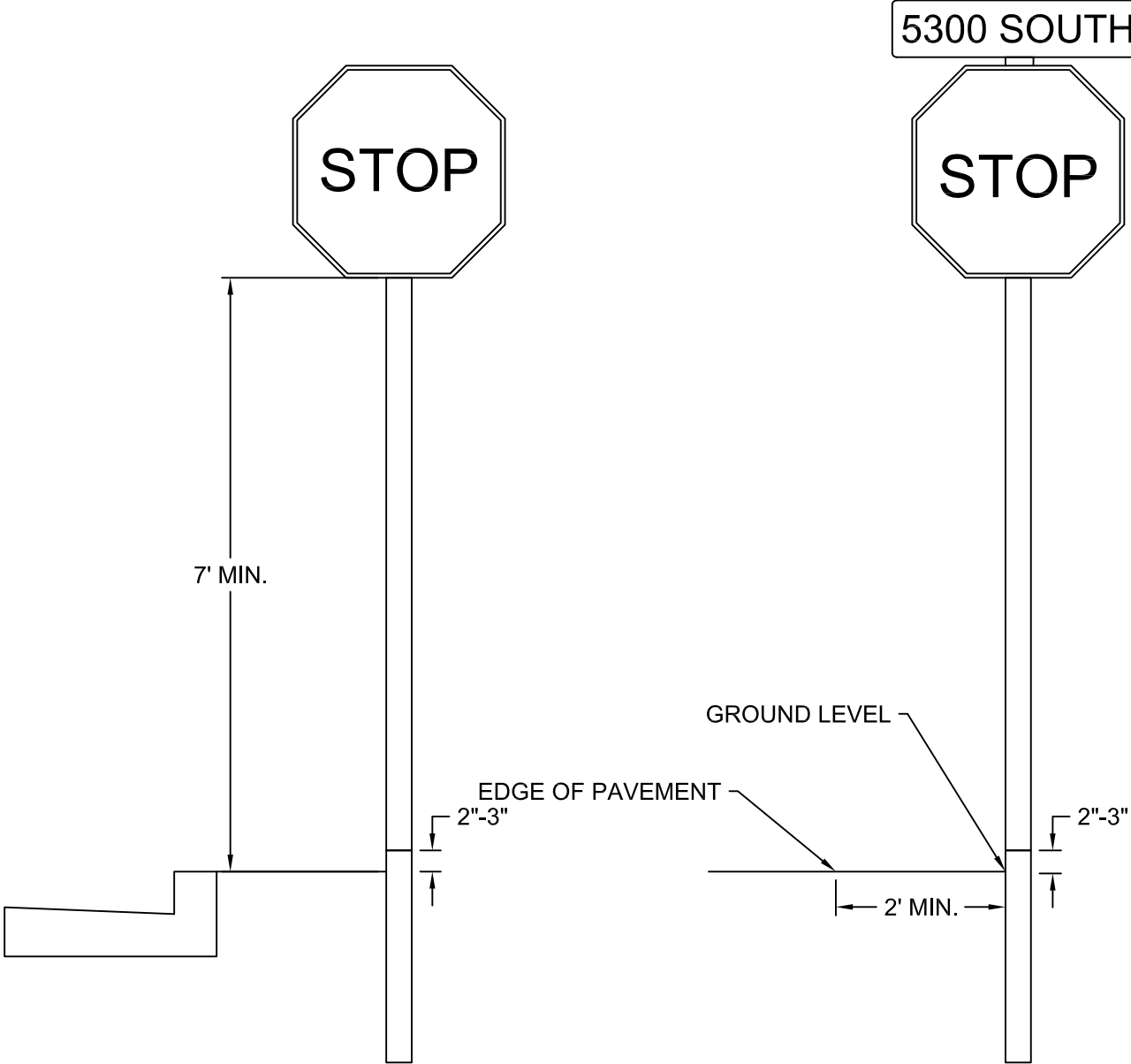
MURRAY CITY

TRENCH BACKFILL

DETAIL C - 7

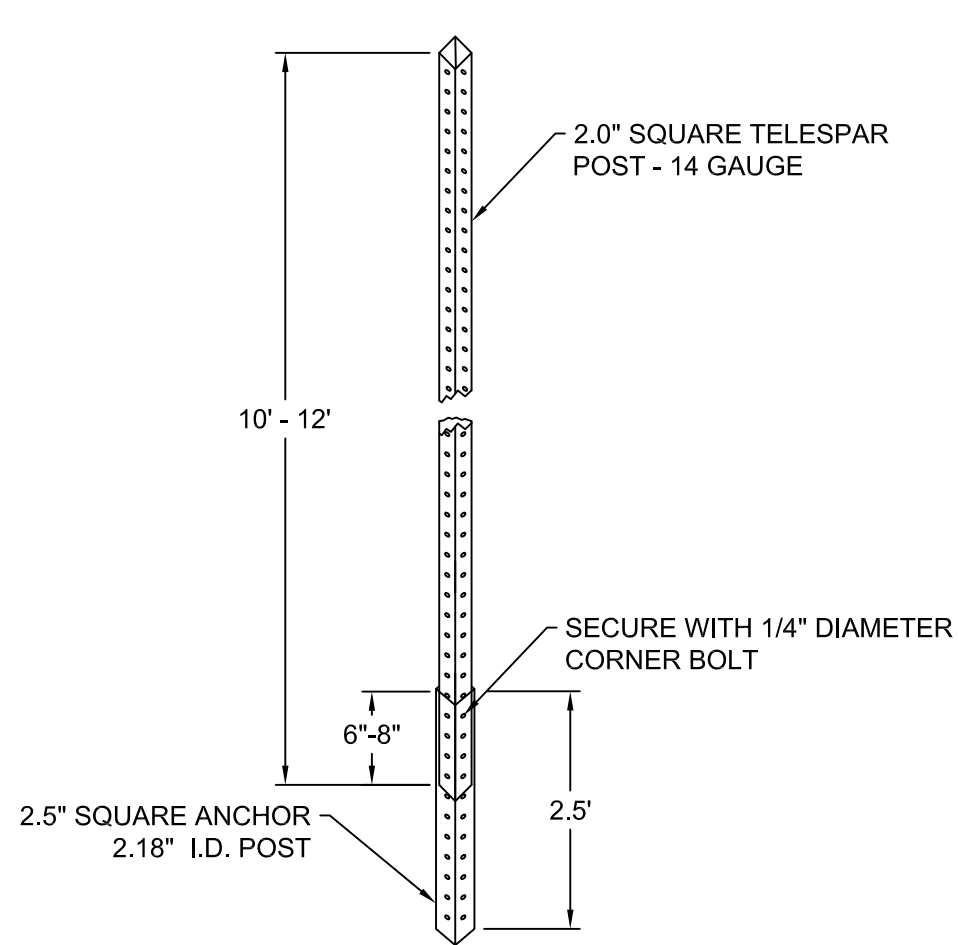
GENERAL NOTES

- 1. SIGNS SHALL BE PLACED IN CONFORMANCE WITH THE LATEST M.U.T.C.D.
- 2. STREET MARKERS SHALL BE MADE EITHER BY HIGH QUALITY INK ON REFLECTIVE SHEETING OR ON GREEN E.C. FILM OVERLAY ON A WHITE DIAMOND GRADE REFLECTIVE SHEETING.
- 3. SIGN BLANK SHALL BE HIGH TENSILE DEGREASED ALUMINUM WITH ALOODINE FINISH. THICKNESS SHALL BE 0.08.
- 4. EACH SIGN SHALL CONSIST OF TWO SIGN BLANKS RIVETED TOGETHER AND MOUNTED AS REQUIRED.
- 5. SIGNS ON PRIVATE ROADS WHEN REQUIRED BY THE CITY ENGINEER SHALL MEET ALL SPECIFICATIONS OF STANDARD SIGNS EXCEPT OVERLAY WITH LEGEND SHALL BE BLUE.
- 6. ALL STREETS WITH NAMES SHALL ALSO HAVE COORDINATE DESIGNATION.
- 7. THE CITY ENGINEER SHALL BE CONTACTED PRIOR TO MAKING SIGNS TO VERIFY CORRECT STREET NAMES.
- 8. 30" STOP SIGN DIAMOND GRADE
- 36" YIELD SIGN DIAMOND GRADE
- 30" X 30" WARNING SIGN DIAMOND GRADE
- 24 X 30" SPEED LIMIT DIAMOND GRADE
- 9. IF PLACEMENT STANDARDS CANNOT BE MET, CONTACT CITY ENGINEER.
- 10. IF INSTALLING SIGNS ACCORDING TO THIS STANDARD CAUSES THE SIGN TO BE OBSTRUCTED OR THE VISIBILITY IS IMPAIRED IN ANY WAY, CONTACT THE CITY ENGINEER FOR AND NECESSARY MODIFICATIONS.
- 11. BLUE STAKES SHALL BE NOTIFIED FOR UTILITY LOCATIONS BEFORE ANY INSTALLATION.

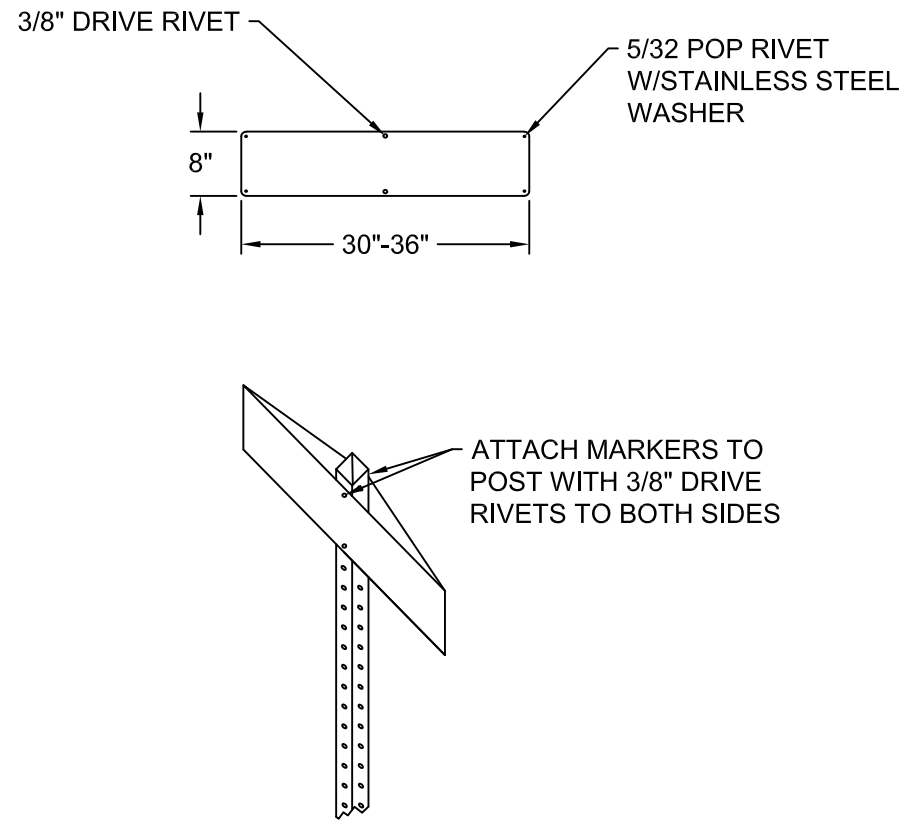


INSTALLATION DETAILS

DATE	REVISIONS	MADE BY	MURRAY CITY		
			MURRAY CITY CORPORATION		
			ENGINEERING DEPARTMENT		
			4646 SOUTH 500 WEST		
			MURRAY, UT 84123		
			801 270-2400		
			SIGN INSTALLATION AND		
			GENERAL NOTES		
			DETAILS C-8		



POST AND ANCHOR PLACEMENT



SIGN MOUNTING



LETTERING HEIGHTS

DATE	REVISIONS	MADE BY



MURRAY CITY CORPORATION
ENGINEERING DEPARTMENT
4646 SOUTH 500 WEST
MURRAY, UT 84123
801 270-2400

MURRAY CITY
POST AND SIGN
MOUNTING DETAIL
DETAILS C-9